



## Oak Lodge Close

Stanmore

£680,000

An extremely large, two bedroom, two bathroom flat available chain free on the second floor of a prestigious block in central Stanmore.

The property has a reception room of nearly 450 square feet with a private balcony, as well as a separate kitchen with space for a family dining table. In addition there is a large master bedroom with built-in wardrobes and an ensuite bathroom with his & hers sinks, a full bathtub and a separate shower. The second double bedroom also has an ensuite bathroom.

The flat also has a utility room, guest WC, lots of built-in storage, resident parking and a single garage. Oak Lodge Close in a central Stanmore location, close to the shops, cafes and amenities of Stanmore Broadway and Stanmore tube station. The building is served by a daytime porter, a video entry phone system, a lift servicing all levels and attractive communal gardens.

Share of freehold with 940 years remaining on the lease.  
Service Charge of approximately £6000 per annum.  
Ground Rent Nil.  
Harrow Council Tax Band G.

- Two Bedrooms
- Two Bathrooms
- Separate Dine-In Kitchen
- Private Balcony
- Daytime Porter
- Chain Free

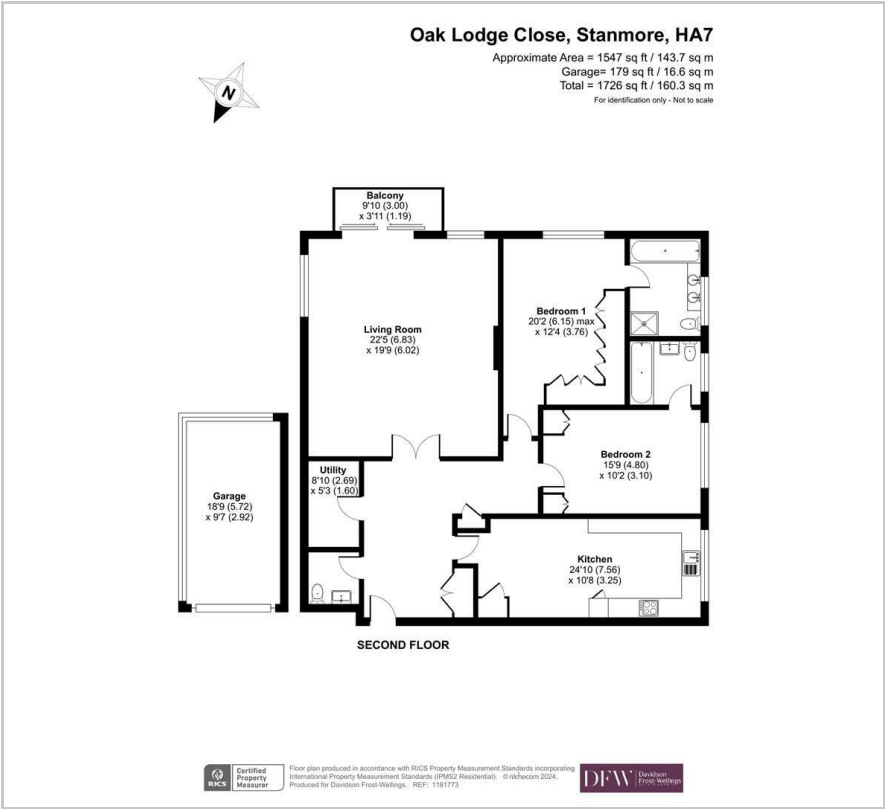
### Viewing

Please contact our Davidson Frost-Wellings Office on 020 8954 8806 if you wish to arrange a viewing appointment for this property or require further information.





Floor Plan



Area Map



Energy Efficiency Rating		
	Current	Potential
Very energy efficient - lower running costs		
(92 plus) <b>A</b>		
(81-91) <b>B</b>		
(69-80) <b>C</b>		
(55-68) <b>D</b>		
(39-54) <b>E</b>		
(21-38) <b>F</b>		
(1-20) <b>G</b>		
Not energy efficient - higher running costs		
England & Wales		EU Directive 2002/91/EC



These particulars, whilst believed to be accurate are set out as a general outline only for guidance and do not constitute any part of an offer or contract. Intending purchasers should not rely on them as statements of representation of fact, but must satisfy themselves by inspection or otherwise as to their accuracy. No person in this firms employment has the authority to make or give any representation or warranty in respect of the property.